

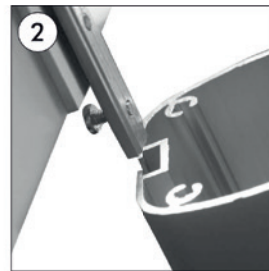
 Logo plate in white acryl for front mounting. Incl. fitting for mounting.

 Logoplatte für Frontmontage in weissem Acryl. Inkl. Beschlag.

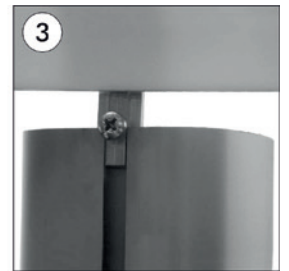
 Logoplade i hvid akryl til frontmontage. Inkl. beslag.



- Remove the pole cap.
- Die Endkappe abnehmen.



- Slide the nut&screw through the pole channel.
- Die mit Mutter zusammen befindliche Schraube in dem Kanal stechen und in entsprechender Höhe befestigen.



- Tighten the screw at desired height. This screws is for header placement. Put the pole cap back.
- Logohalterung bis auf die festgezogene Schraube mit Mutter durch stechen und die Endkappe daraufsetzen.

Model	Art. no.	Logo plate	Colour	Package size and weight
966	2898	36 x 16 cm	White	37 x 18 x 2 cm 1,0 kg